

Leo Asemota & EotLA London

Autumn 2011 news

EDITION PRINT

ACIT(w)

ARTISTS' BOOK

re Map of a City

ACIT(w)

EotLA has published *ACIT(w)*, a composite print of the 35 Polaroid Time Zero SX-70 colour photographs that make up the work “A Circle In The (w)Hole” from Stage I of *The Ens Project’s First Principles* currently on exhibition at New Art Exchange in Nottingham.

Published October 2011

EotLA

Digital pigment print on Fuji Crystal Archive paper.

Dimensions 40 x 60 in (101.6 x 153 cm)

Edition of 35 (signed and numbered by Leo Asemota) with 5 artist proofs

Guaranteed exhibition price: £350.00 / €401.00 / \$550.48

(Please note that price will increase after the exhibition ends and as editions sell out).

Delivery is by courier service and within 28 days.

For further enquiries or to place an order please contact:

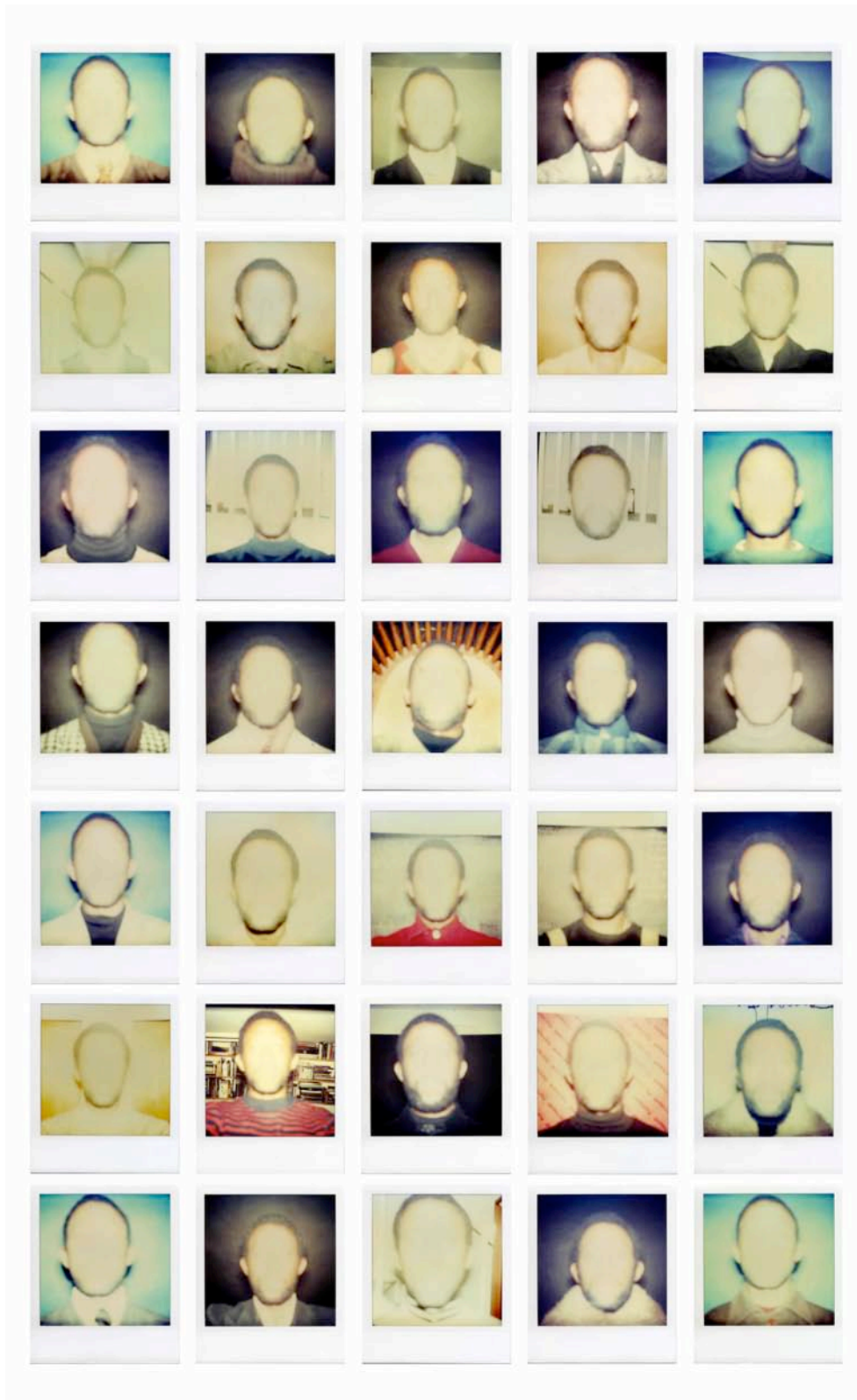
Sally Fischer at EotLA: admin@eotla.com

Leo Asemota | *The Ens Project’s First Principles*

New Art Exchange, Nottingham

16 September – 26 November 2011

Please visit www.nae.org.uk for a full public programme of exhibition tours and talks on the exhibition.



ACIT(w)

40 x 60 in (101 x 152 cm)

Edition of 35

Guaranteed exhibition price: £350.00 / €401.00 / \$550.48

re Map of a City

This publication commemorates the 10th anniversary of Leo Asemota's photographic essay "Map of a City" in which he travelled across London for a year documenting the now discontinued Witness Appeal boards that were once iconic of London's city streets. Bringing together various elements from the project including a selection of images from over 3000 that make up the body of work, pages from his travel diaries, newspaper clippings and spreads from Magnet published by Iniva and the controversial London Borough of Camden's Black history month publication in 2001, *re Map of a City* is a comprehensive summary of the project and emphasizes the artists' book as a medium important to Asemota's practice.



LEO ASEMOTA
re MAP OF A CITY

Leo Asemota *re Map of a City*

Published November 2011

100 pages

7.44 x 9.68 in (19 x 25 cm)

Perfect bound soft cover

Full colour

English

ISBN: 978-0-9542737-3-6

£20.00 / €23.00 / \$31.50

Info | Contact

Leo Asemota

Born in Benin City, Nigeria Leo Asemota settled in London, England in 1998 soon after completing his studies at the London Institute. An artist possessed of a dynamic creative energy, Asemota's practice encompass many disciplines, an integral part of which is his project space and publishing enterprise. Recent solo shows include: *The Prime Mover's will on the Architect*, Contemporary Rooms at EotLA, London; *The Handmaiden Part 2* CBK Zuidoost Amsterdam; *The Handmaiden Part 1*, Metal Project Space Liverpool with group shows at Space Studios, London; Netherlands Media Art Institute, Amsterdam; Stedelijk Museum (Bureau Amsterdam), Autocenter, Berlin and Bodhi Art New York.

EotLA

EotLA was set-up to sustain Asemota's creative entrepreneurial energy. Based in Holloway, North London our modest self-contained premises houses Asemota's studios, a publishing enterprise and the Contemporary Rooms project space. Our edition print series are produced to the highest quality controlled standards and published in an appropriate edition; each work is also signed by Leo Asemota and issued with a certificate of authenticity.

Contact

Sally Fischer
Leo Asemota & EotLA
Ground Floor
210 Hornsey Road
London
N7 7LL
+4475 4670 3303

admin@eotla.com